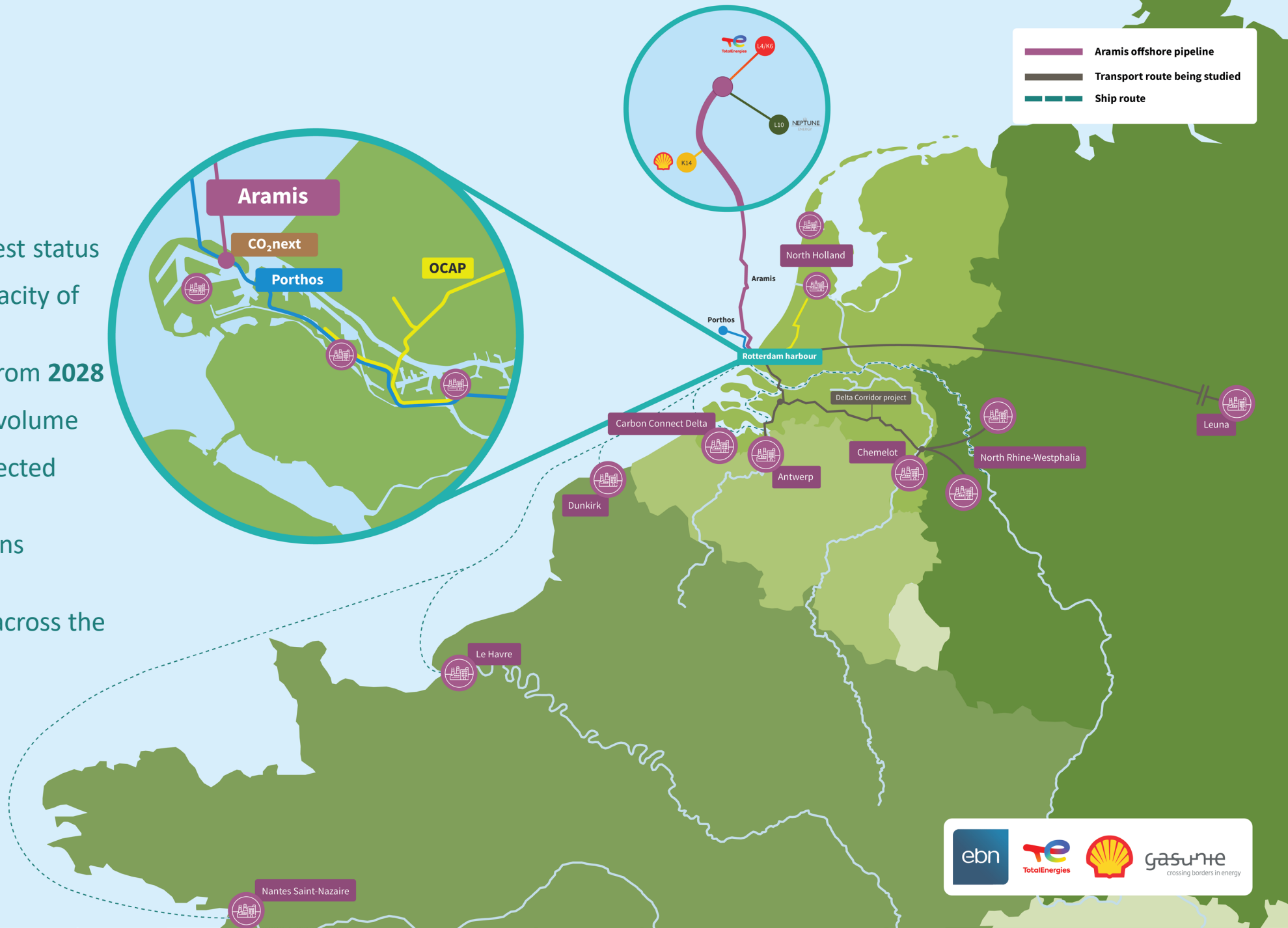


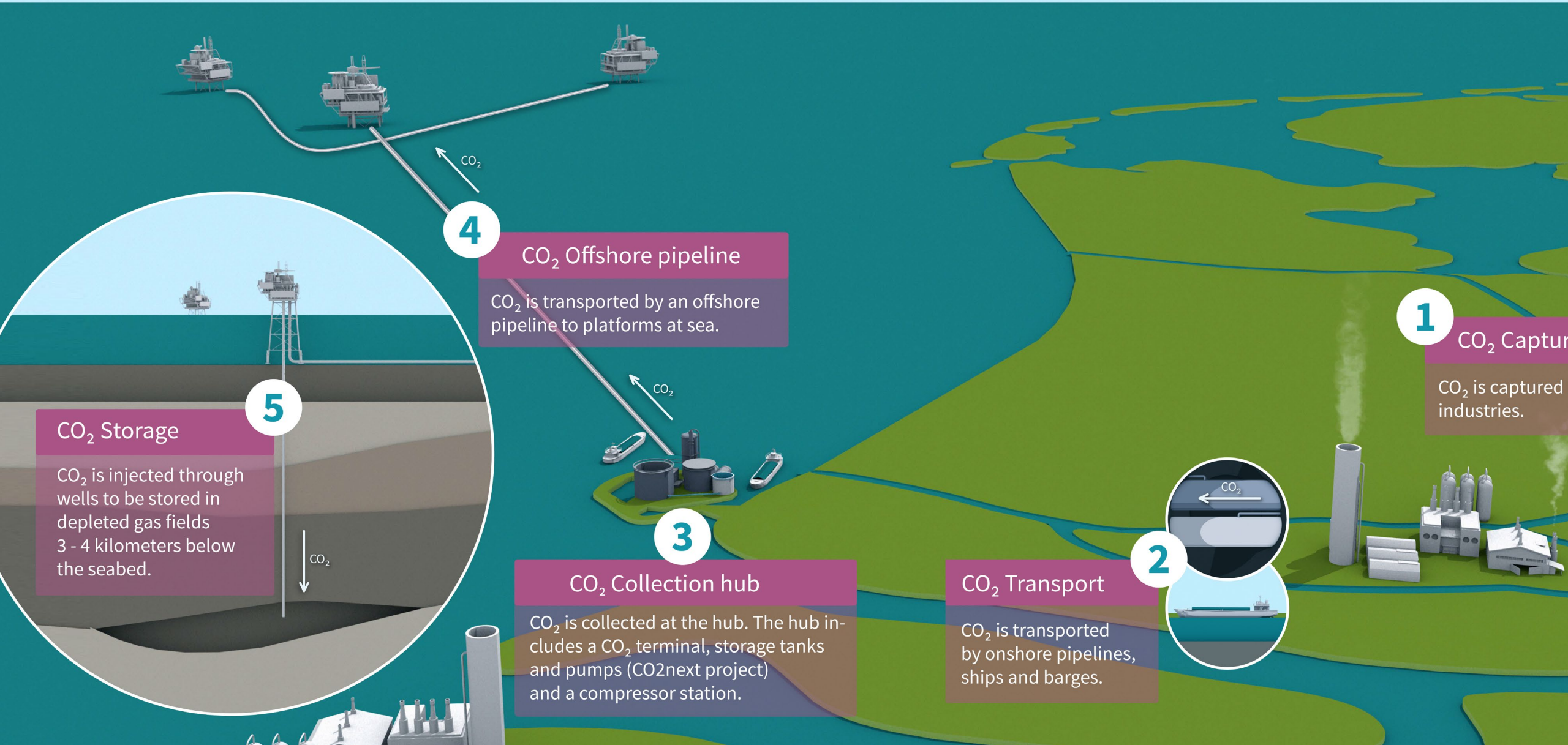


ARAMIS

Project update
CATO, 26 September 2023

- Public-private partnership
- EU Project of Common Interest status
- Aramis offshore pipeline capacity of **22 Mtpa**
- Expected to be operational from **2028**
- Minimum **7,5 Mtpa** starting volume
- Overall storage capacity expected **>400 Mt**
- Aramis will enable connections to several European clusters
- Strong cooperation needed across the CCS value chain





1 CO₂ Capture
CO₂ is captured from industries.



2 CO₂ Transport
CO₂ is transported by onshore pipelines, ships and barges.

3 CO₂ Collection hub
CO₂ is collected at the hub. The hub includes a CO₂ terminal, storage tanks and pumps (CO2next project) and a compressor station.

4 CO₂ Offshore pipeline
CO₂ is transported by an offshore pipeline to platforms at sea.

5 CO₂ Storage
CO₂ is injected through wells to be stored in depleted gas fields 3 - 4 kilometers below the seabed.



ARAMIS

